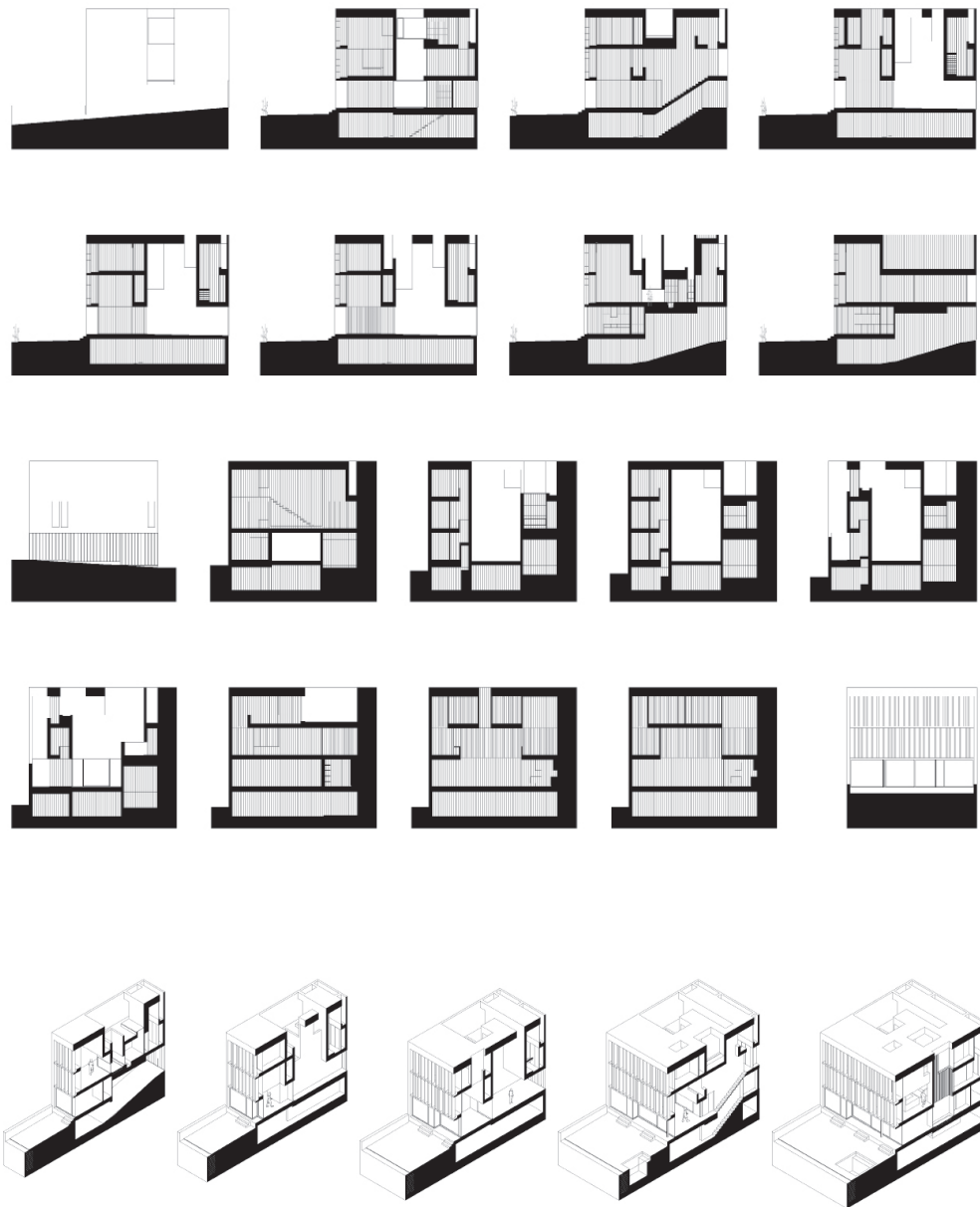




M³ MODERN ARCHITECTURE 4

COMMERCIAL
CORPORATE
EDUCATIONAL
PUBLIC
RESIDENTIAL

SANDU



Ted'A arquitectes
Can Joan Jaume i n'Apol·lònia

Area: ...
Photography: Ted'A arquitectes
Location: Mallorca, Spain
Residential

They are stony, with a rocky feeling, tough constructions, hard, opaque, closed to the street. Rough walls are splashed of tiny openings. Of this early reading, the first will of the project becomes detached: sustaining the opacity of this new building towards the street.

The building characterizes itself as a frame, as a shell, and is described as a concrete box, with one side totally open, but a jealousy of vertical pieces of sandstone will protect for us of the sun. Towards the street the openings will be scarce, towards the sights there will not be obstacles. So it is portrayed as a simple, opaque, strong and geometrically clear volume.

In contrast with the outer simplicity, the inside becomes complex, unfold, luminous, open and clear. The structure, as it happens in the home-palaces of Mallorca—copies of the ancient palaces of the Florentine merchants, is dominated by a central courtyard, of square projection. This courtyard is open to the sky and to the external views. The house turns around this courtyard and on it. This courtyard is sculpted in the blind volume. It is a courtyard splashed by the light.